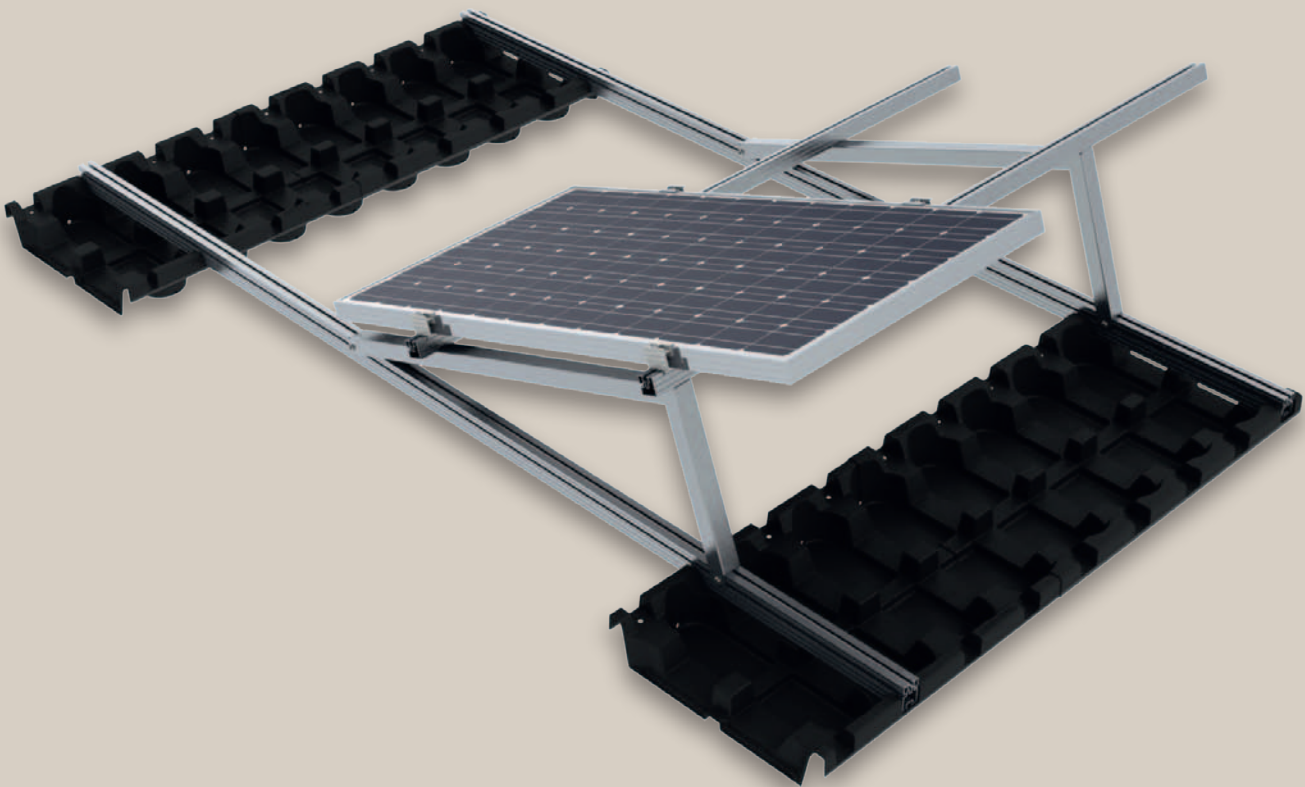


## Flat roof system Vario-Light

FLAT ROOFS ARE  
EASY FOR US.



\*A 12-year guarantee on all plastic parts



## Flat roof system Vario-Light

### Easy to handle.

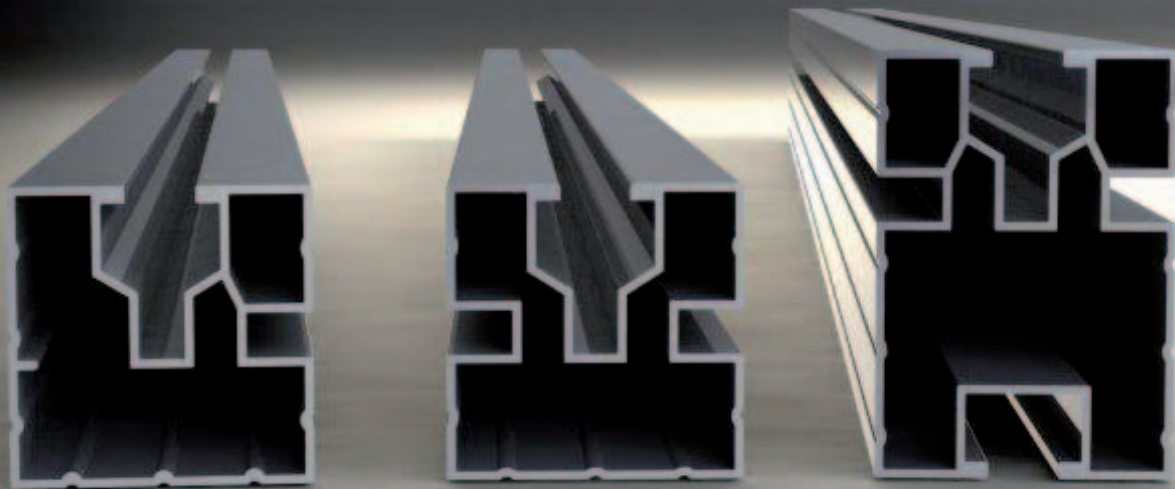
Flexible, light and secure – that is our Vario-Light assembly system. These characteristics make it especially suitable for flat roofs with a low bearing capacity. Without a rigid base construction, the available roof space can be optimally used with various fitting trays. The trays are used to fix the mounting profile on the roof and are absolutely resistant to storms and rain due to their anti-slide coating. A built-in insertion in the roof is therefore not needed in this system.

The Vario-Light system can be installed on flat roofs with a maximum bearing capacity from 14 kg/m<sup>2</sup>. Trays filled with gravel ensure an even distribution of weight.

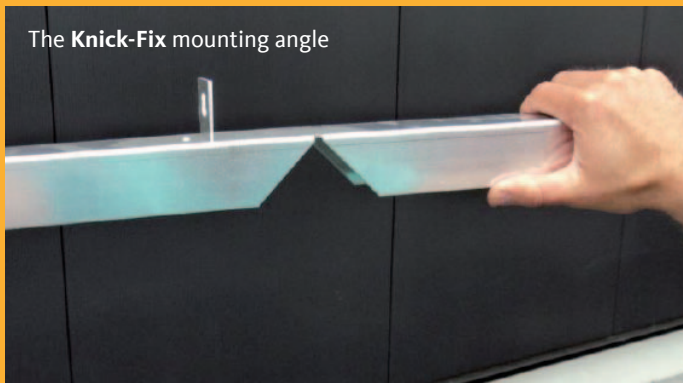
Convincing: The salt spray test has confirmed the quality of our assembly system. So you remain protected from practically all corrosion even after decades of operation in areas with high levels of salt.

The Vario-Line mounting profile facilitates rapid assembly on the roof – without time-consuming threading of screws and bolts in the mounting groove.

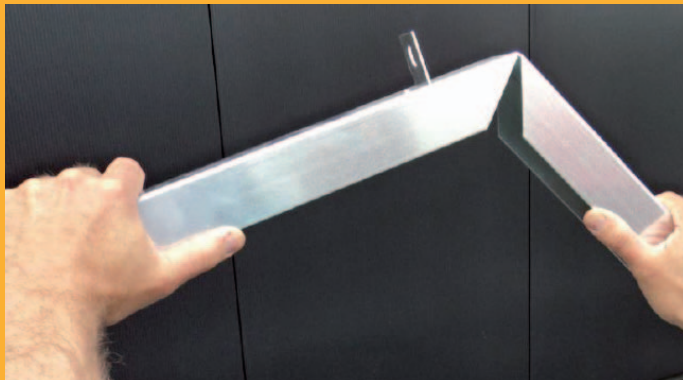
The perfect assembly system: **Vario-Line**



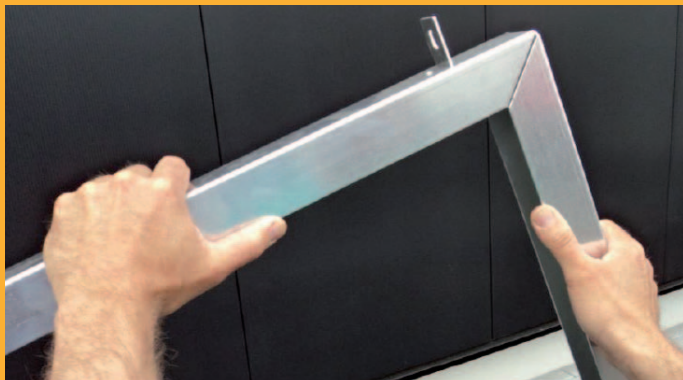
The perfect assembly system: **Vario-Light**



Our freshly-developed Knick-Fix mounting angle is quickly and easily assembled. The light-weighter is delivered at full extension to save space and is just folded, erected and fixed in a single operation at installation time.

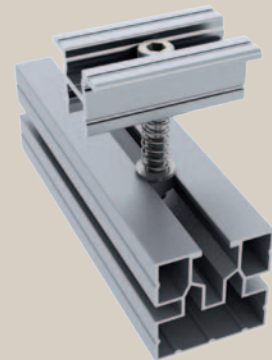


The Quick-Fix central clamp supplements the Vario-Line and Knick-Fix with a further easily-assembled component. The central clamp is prefabricated and thus ready for immediate use. The slot nut is inserted in the nut of the aluminium mounting, pressed down and simultaneously turned by approx. 30°. To obtain a smooth connection, the hexagonal inner screw must be firmly affixed. The screw spring prevents the actual clasp from inconveniently sliding down.



With our Vario-UltraLight system you save time in assembly – and thereby hard cash.

Central Quick-Fix clasp



Awarded: RAL-certified all along the line

We are one of the few companies in Germany, which are certified in all four categories of the photovoltaic area of RAL-GZ 966.



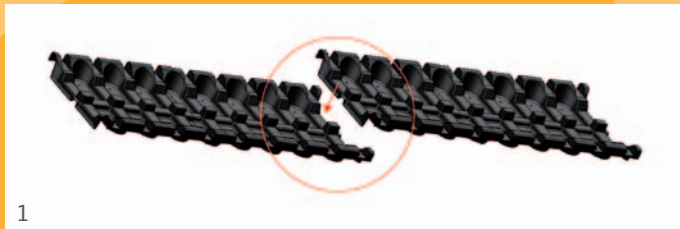
# WHEN IT COMES TO THE ENVIRONMENT, WE DO IN ROME WHAT THE ROMANS DO.

VfL Wolfsburg has won a large environmental partner. With zentralsolar deutschland, the Bundesliga competitor has entered into cooperation within the framework of its Corporate Social Responsibility Activities (CSR).



## EASY. FAST.

Our Vario-Light assembly system.



1  
Every Vario-Light tray can be slid lengthwise into a further tray.



3  
The aluminium mountings are placed in the recesses foreseen for them.



2  
We recommend weighting with gravel to distribute the weight evenly.



4  
Thanks to the flexibility of the system, the available roof space is optimally used.

You can rely on our qualified Service Partners: